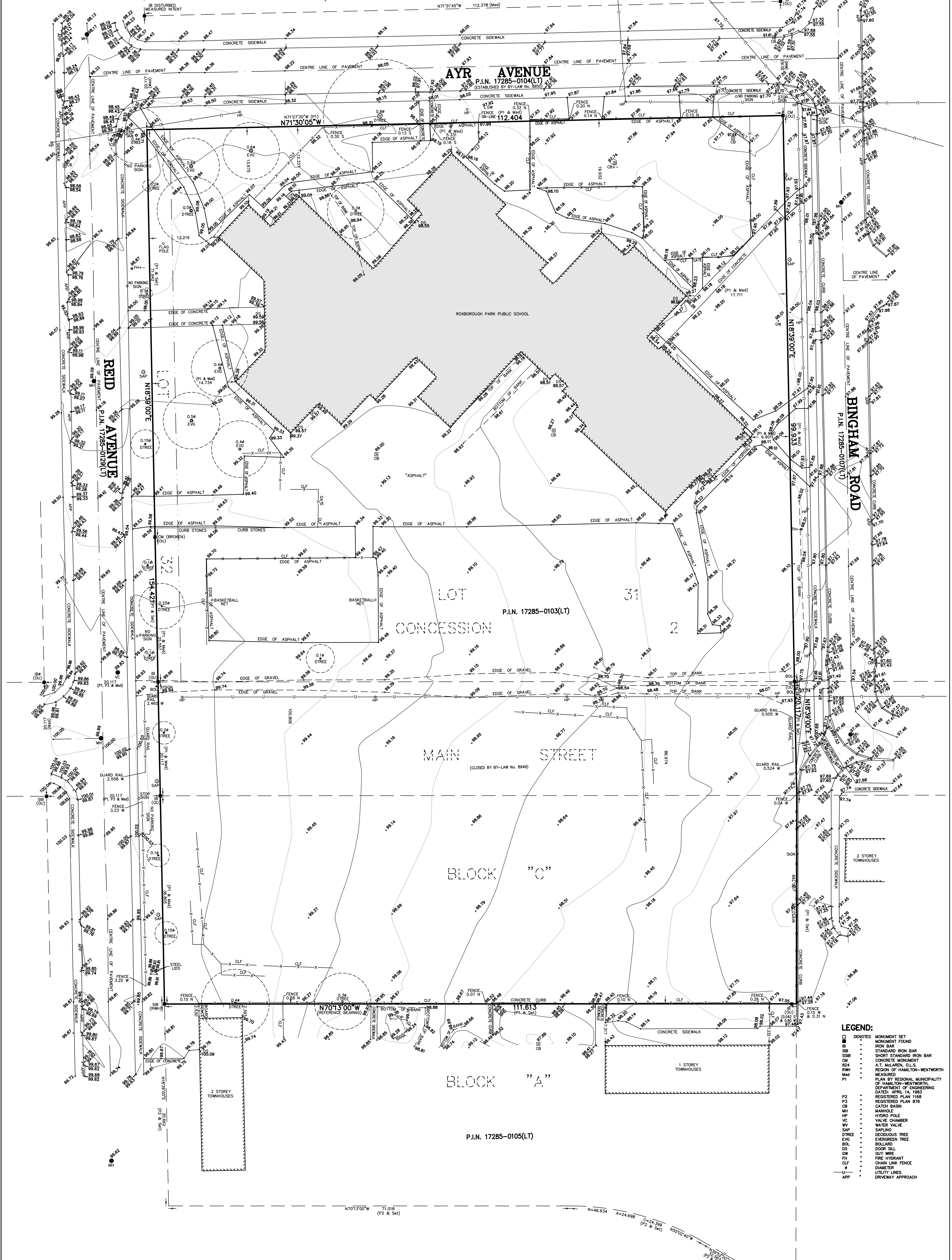
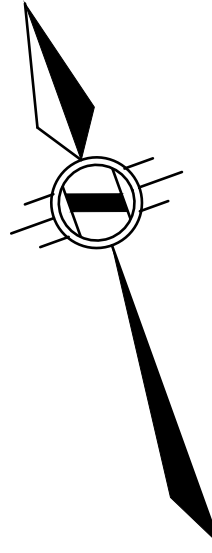


TOPOGRAPHIC SURVEY
 OF PART OF
 LOTS 31 & 32
 CONCESSION 2
 AND
 PART OF BLOCK "C" & PART OF MAIN STREET (CLOSED)
 REGISTERED PLAN No. 876
 GEOGRAPHIC
 TOWNSHIP OF SALTFLILET
 IN THE
 CITY OF HAMILTON
 SCALE 1:300 METRIC
 S.D. McLAREN, O.L.S. - 2016



LEGEND:

□	DENOTES	MONUMENT SET
IB	MONUMENT FOUND	IRON BAR
SB	STANDARD IRON BAR	
SSB	SHORT STANDARD IRON BAR	
CM	CONCRETE MONUMENT	
RD4	A.T. McLAREN, O.L.S.	REGION OF HAMILTON-WENTWORTH
RWH	REGISTERED PLAN 1168	MEASURED
Med	PLAN BY REGIONAL MUNICIPALITY	OF HAMILTON-WENTWORTH
P1	DEPARTMENT OF ENGINEERING	DATED: APRIL 14, 1983
		REGISTERED PLAN 876
P2	CATCH BASIN	
P3	MANHOLE	
CB	HYDRO POLE	
VC	VALVE CHAMBER	
WV	WATER VALVE	
SAF	SARFUNG	
DTREE	DECIDUOUS TREE	
EVG	EVERGREEN TREE	
BOL	BOLLARD	
DS	DOOR SILL	
GW	GUY WIRE	
FH	FIRE HYDRANT	
CLF	CHAIN LINK FENCE	
Ø	DIAMETER	
APP	DRIVEWAY APPROACH	

METRIC NOTE
 DISTANCES AND COORDINATES SHOWN ON THIS PLAN ARE IN METRES AND CAN BE CONVERTED TO FEET BY DIVIDING BY 0.3048

BEARING NOTE:
 BEARINGS ARE ASTRONOMIC AND ARE REFERRED TO THE NORTHERLY LIMIT OF BLOCK "A" AS SHOWN ON P1, HAVING A BEARING OF N70°13'00\"/>

SURVEYOR'S CERTIFICATE:
 I CERTIFY THAT:
 1. THIS SURVEY AND PLAN ARE CORRECT AND IN ACCORDANCE WITH THE SURVEY ACT, THE SURVEYORS ACT AND THE REGULATIONS MADE UNDER THEM
 2. THE SURVEY WAS COMPLETED ON THE 19th DAY OF MAY, 2016
 JUNE 7, 2016
 DATE

© S.D. McLAREN, O.L.S. - 2016. NO PERSON MAY COPY, REPRODUCE, DISTRIBUTE OR ALTER THIS PLAN IN WHOLE OR IN PART WITHOUT THE WRITTEN PERMISSION OF S.D. McLAREN, O.L.S.
A.T. McLaren Limited
 LEGAL AND ENGINEERING SURVEYS
 69 JOHN STREET SOUTH, SUITE 230
 HAMILTON, ONTARIO, L8N 2B9
 PHONE: (905) 527-5539 FAX: (905) 527-0032
 Drawn: AC Checked: DG Created: MWJ Scale: 1:300 Date: S. DAN McLAREN, O.L.S.