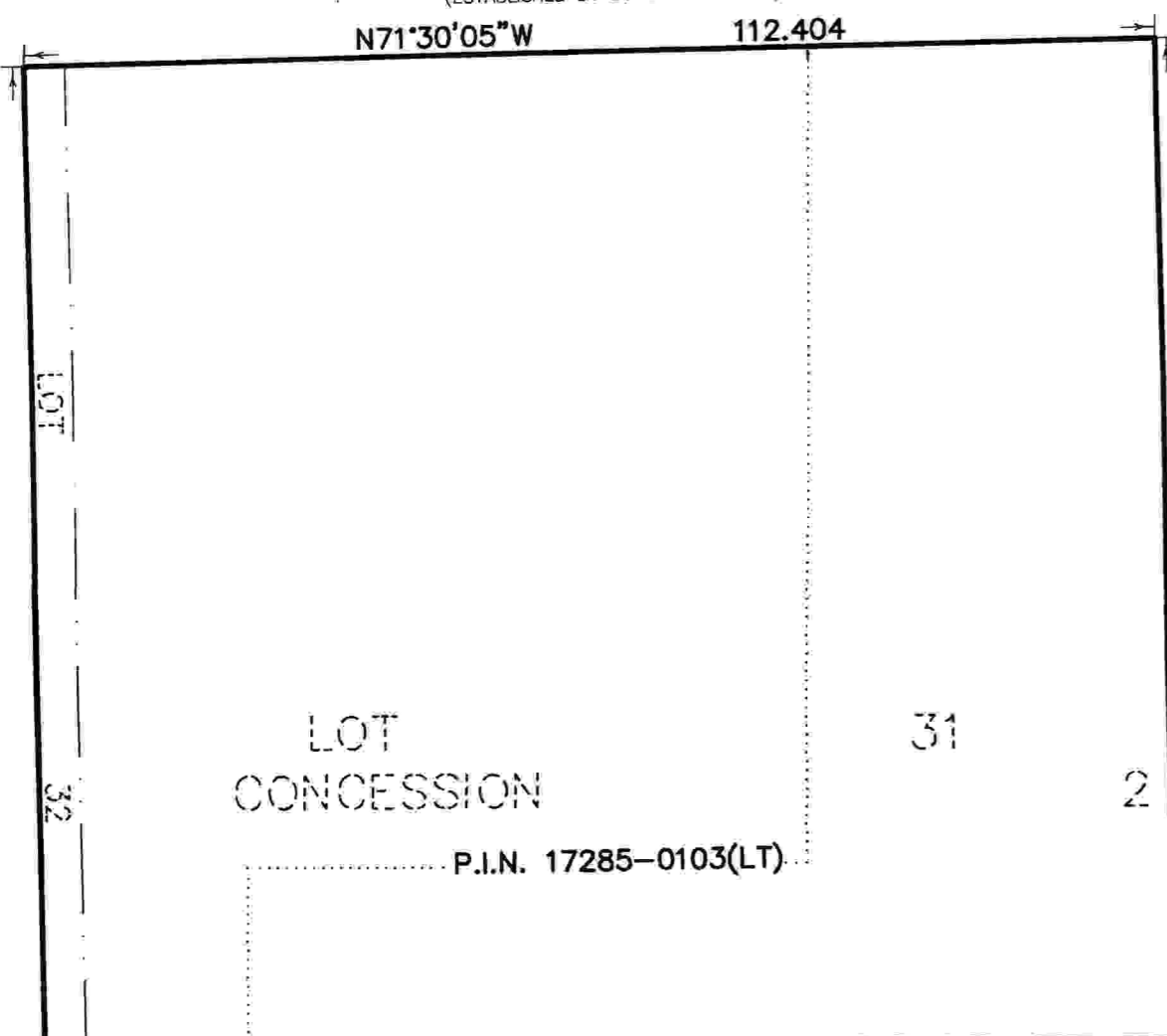


**AYR AVENUE**

P.I.N. 17285-0104(LT)  
(ESTABLISHED BY BY-LAW No. 8950)

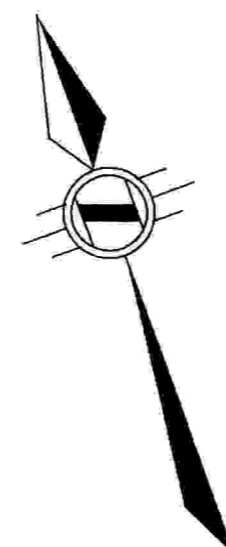
N71°30'05"W 112.404



**BINGHAM ROAD**

P.I.N. 17285-0107(LT)

N18°39'00"E 99.933



SKETCH  
OF PART OF  
**LOTS 31 & 32  
CONCESSION 2**  
GEOGRAPHIC  
**TOWNSHIP OF SALT FLEET**  
AND PART OF  
**BLOCK 'C'**  
**REGISTERED PLAN 876**  
AND ALL OF  
**BLOCKS 'A' & 'B'**  
**REGISTERED PLAN 1168**  
IN THE  
**CITY OF HAMILTON**

SCALE 1: 750 METRIC



S.D. McLAREN, O.L.S. - 2017

**REID AVENUE**

P.I.N. 17285-0129(LT)

277.865

N18°39'00"E

LOT 32

LOT 31

(BY REGISTERED PLAN 876)  
**MAIN STREET**

(REFERENCE BEARING)  
N70°13'00"W 112.370

**BLOCK "C"**  
**REGISTERED PLAN 876**

**HAYES AVENUE**

PIN 17285-0132 (LT)

(ESTABLISHED BY BY-LAW No. 8950)

N70°13'00"W 171.310

**ARMSTRONG AVENUE**

PIN 17284-0065 (LT)

**BLOCK "A"**  
**REGISTERED PLAN 1168**  
PIN 17285-0105 (LT)

**LANG STREET**  
(BY REGISTERED PLAN 1188)  
PIN 17285-0106 (LT)

**BLOCK "C"**  
**REGISTERED PLAN 876**  
PIN 17284-0068 (LT)

**BLOCK "B"**  
**REGISTERED PLAN 1168**  
PIN 17284-0165 (LT)

**PART 1**  
**PLAN 62R-16786**  
11263

**CITY OF HAMILTON**  
PIN 17284-0175 (LT)

N70°13'00"W 76.200  
N70°13'00"W 12.132

**LOT 31**  
**CONCESSION 2**  
PIN 17284-0069 (LT)

N18°37'00"E 14.544

N70°14'00"W 60.960  
**REGISTERED PLAN 670**

LOT 212  
LOT 211  
LOT 210  
LOT 209  
LOT 208

**BLOCK "C"**  
**REGISTERED PLAN 876**

**QUEENSTON ROAD**

**NOTE:**  
BOUNDARY IS DERIVED FROM A PLAN BY  
A.T. McLAREN DATED JUNE 7, 2016,  
REGISTERED PLAN 876, REGISTERED PLAN  
1168 AND PLAN 62R-16786 AND NOT  
BY FIELD SURVEY.

**LEGEND:**

- DENOTES MONUMENT SET
- MONUMENT FOUND
- IRON BAR
- SB STANDARD IRON BAR
- SSB SHORT STANDARD IRON BAR
- 824 A.T. McLAREN, O.L.S.
- Msd MEASURED

**METRIC NOTE**

DISTANCES SHOWN ON THIS  
PLAN ARE IN METRES AND  
CAN BE CONVERTED TO FEET  
BY DIVIDING BY 0.3048

**BEARING NOTE:**

BEARINGS ARE ASTRONOMIC AND ARE  
REFERRED TO THE SOUTHERN LIMIT OF  
MAIN STREET AS SHOWN ON REGISTERED  
PLAN 876 AS BEING N70°13'00"W.

JANUARY 3, 2017  
DATE

*S.D. McLaren*  
S. DAN McLAREN, O.L.S.



**A.T. McLaren Limited**  
LEGAL AND ENGINEERING SURVEYS

69 JOHN STREET SOUTH, SUITE 230  
HAMILTON, ONTARIO, L8N 2B9  
PHONE (905) 527-8559 FAX (905) 527-0032

Drawn KM Checked RBM Scale 1:750 Dwg.No. 34976-S